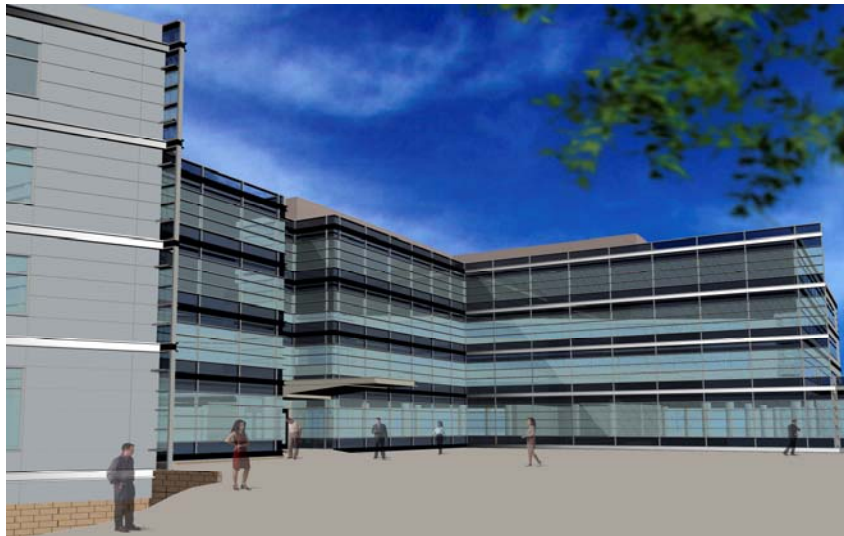




Symantec HQ Culver City Culver City, CA



Owner:	Symantec Corp.
Developer:	Sares-Regis Group
Completion Date:	October 2007
Size:	550,000 ft ² 5 story office building, 6 level 670,000 ft ² parking garage, 40,000 ft ² of high-density data center and lab space
Architect:	Hellmuth, Obata & Kassabaum, Inc.
General Contractor:	Webcor Builders
Mechanical Contractor:	Critchfield Mechanical, Inc.
HVAC System Description:	Underfloor air distribution with perimeter underfloor variable speed heating fan-coils, 2300 ton chilled water plant with variable speed chillers and primary-only variable speed pumping system.
Taylor Engineering's Role:	Full design of HVAC, plumbing, and energy management & control systems; HVAC system and control system commissioning.
References:	Symantec: Marcia Fields (mfields@symantec.com) Sares-Regis: Allison Gorelick (agorelick@srgnc.com) HOK: Carl Johnson (carl.johnson@hok.com) Webcor: Phil Williams (phil@webcor.com)



Taylor Engineering

1080 Marina Village Parkway, Suite 501 ■ Alameda, CA 94501-6427 ■ (510) 749-9135 ■ Fax (510) 749-9136

| Critchfield: Steve Gustafson (sg@cmihvac.com)